

KD-Validated Anti-Epsin 2 Mouse Monoclonal Antibody
Mouse monoclonal antibody
Catalog # AGI2032**Specification**

KD-Validated Anti-Epsin 2 Mouse Monoclonal Antibody - Product Information

Application	WB, FC
Primary Accession	O95208
Reactivity	Human
Clonality	Monoclonal
Isotype	Mouse IgG1
Calculated MW	Predicted, 68 kDa, observed, 68 kDa kDa
Gene Name	EPN2
Aliases	EPN2; Epsin 2; KIAA1065; EHB21; EPS-15-Interacting Protein 2; Eps15 Binding Protein; Epsin-2
Immunogen	Recombinant protein of human EPN2

KD-Validated Anti-Epsin 2 Mouse Monoclonal Antibody - Additional Information

Gene ID	22905
Other Names	
Epsin-2, EPS-15-interacting protein 2, EPN2, KIAA1065	

KD-Validated Anti-Epsin 2 Mouse Monoclonal Antibody - Protein Information**Name** EPN2**Synonyms** KIAA1065**Function**

Plays a role in the formation of clathrin-coated invaginations and endocytosis.

Cellular Location

Cytoplasm. Cytoplasmic vesicle, clathrin-coated vesicle. Note=In punctate structures throughout the cell, associated with clathrin-coated vesicles, and particularly concentrated in the region of the Golgi complex

Tissue Location

Highest expression is found in brain. Detected at lower levels in lung and liver.

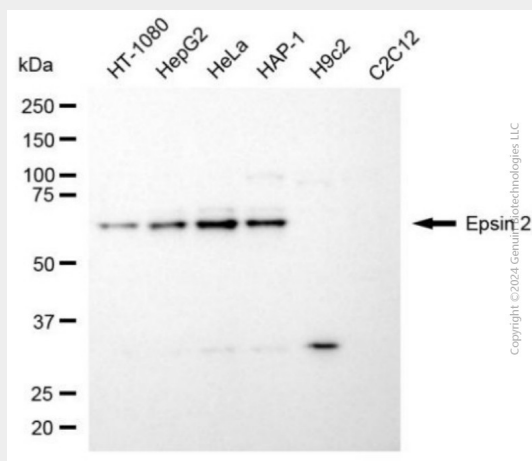
KD-Validated Anti-Epsin 2 Mouse Monoclonal Antibody - Protocols

Provided below are standard protocols that you may find useful for product applications.

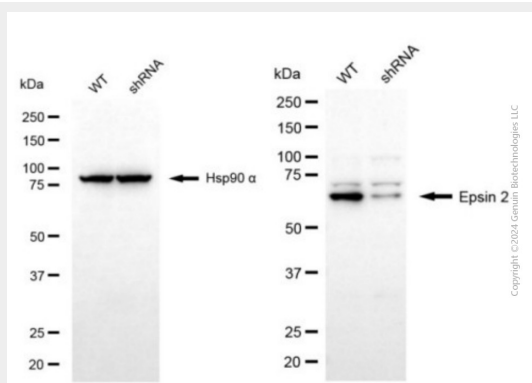
- [Western Blot](#)

- [Blocking Peptides](#)
- [Dot Blot](#)
- [Immunohistochemistry](#)
- [Immunofluorescence](#)
- [Immunoprecipitation](#)
- [Flow Cytometry](#)
- [Cell Culture](#)

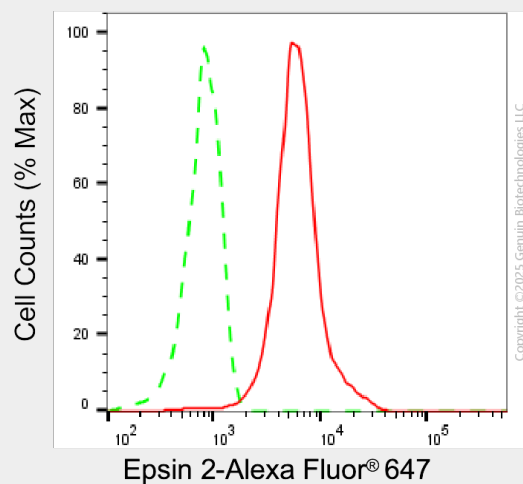
KD-Validated Anti-Epsin 2 Mouse Monoclonal Antibody - Images



Western blotting analysis using anti-epsin 2 antibody (Cat#AGI2032). Total cell lysates (30 µg) from various cell lines were loaded and separated by SDS-PAGE. The blot was incubated with anti-epsin 2 antibody (Cat#AGI2032, 1:2,500) and HRP-conjugated goat anti-mouse secondary antibody respectively.



Western blotting analysis using anti-epsin 2 antibody (Cat#AGI2032). Epsin 2 expression in wild type (WT) and epsin 2 (EPN2) shRNA knockdown (KD) HeLa cells with 20 µg of total cell lysates. Hsp90 α serves as a loading control. The blot was incubated with anti-epsin 2 antibody (Cat#AGI2032, 1:2,500) and HRP-conjugated goat anti-mouse secondary antibody respectively.



Flow cytometric analysis of Epsin 2 expression in HeLa cells using anti-Epsin 2 antibody (Cat#AGI2032, 1:1,000). Green, isotype control; red, Epsin 2.